

09351

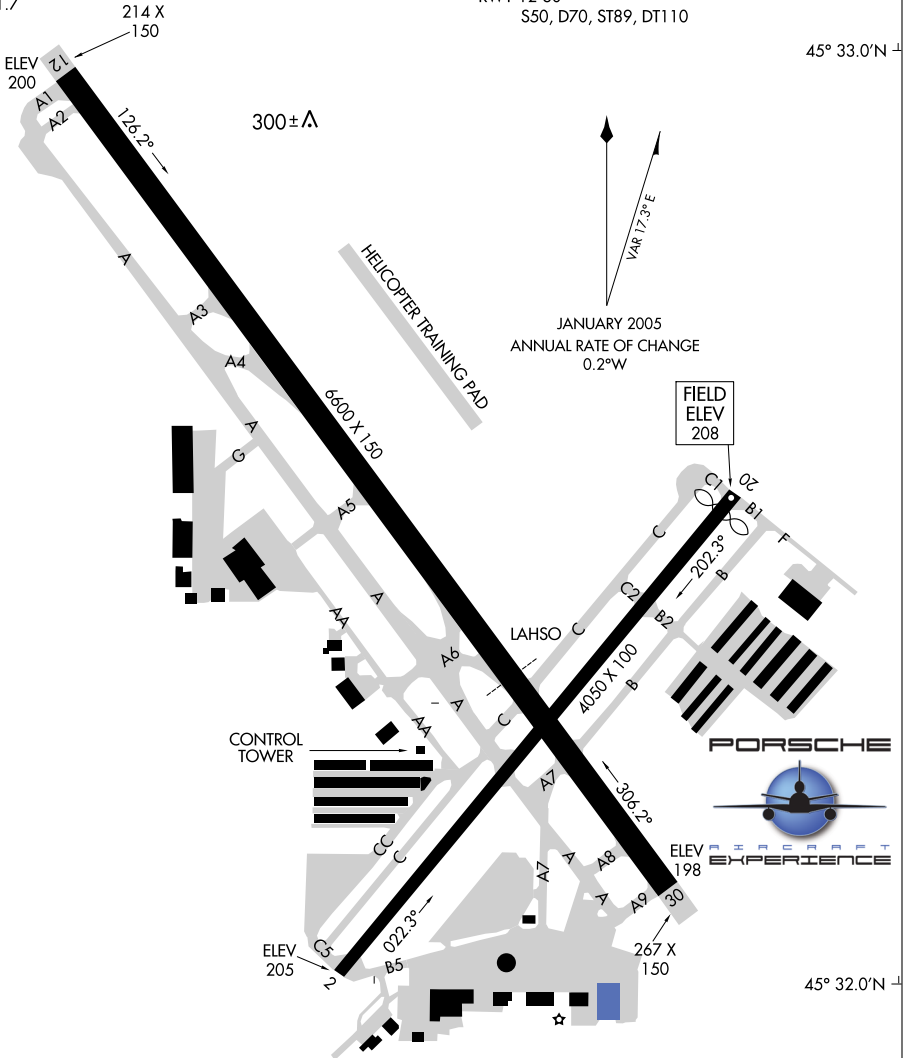
AIRPORT DIAGRAM

AL-5063 (FAA)

PORTLAND-HILLSBORO (HIO)
PORTLAND, OREGON

ATIS
127.65
HILLSBORO TOWER★
119.3 239.3
GND CON
121.7

RWY 2-20
S45, D58, DT90
RWY 12-30
S50, D70, ST89, DT110



Hillsboro Aviation

CAUTION: BE ALERT TO RUNWAY CROSSING CLEARANCES.
READEBACK OF ALL RUNWAY HOLDING INSTRUCTIONS IS REQUIRED.

AIRPORT DIAGRAM

09351

PORTLAND, OREGON
PORTLAND-HILLSBORO (HIO)

NW-1, 11 FEB 2010 to 11 MAR 2010

NW-1, 11 FEB 2010 to 11 MAR 2010